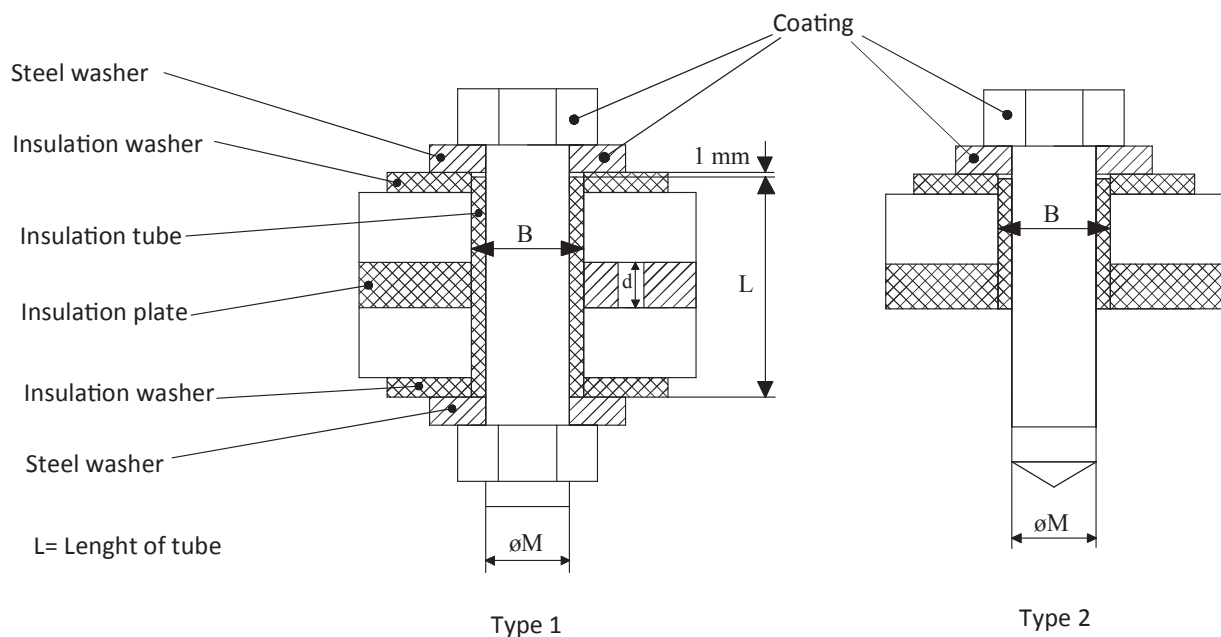


ELEKTRISK ISOLERTE BOLTFORBINDELSER

ø Bolt	Steel washer ø d/Dxs	Insulation washer ø id/Dxs	Insulation tube ø d/D	Bore ø B
M12	13/35 x 5	19/40 x 5	13/18	19
M16	17/45 x 6	23/50 x 5	17/22	23
M20	21/50 x 6	29/50 x 5	22/28	29
M24	25/60 x 8	33/60 x 5	26/32	33



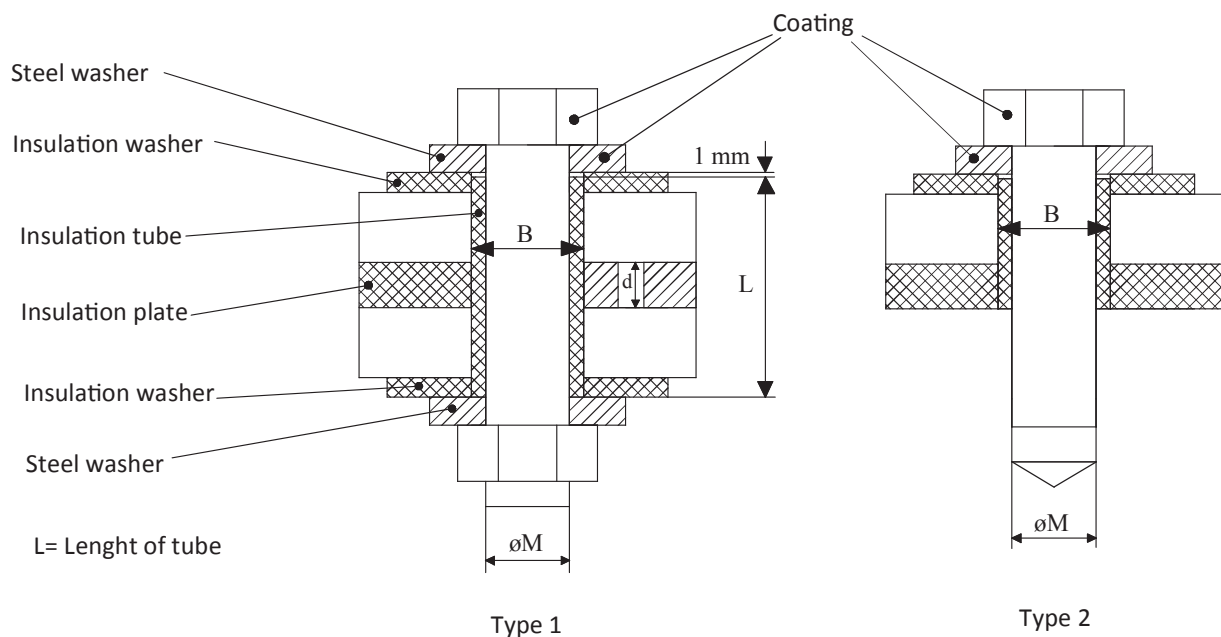
Rørlengden, L, skal være 1mm kortere enn teoretisk avstand mellom underlagsskivene.

Metriske bolter		
Bolt	Rør (d/D)	Skive (d/D x T)
M5	5,5/7,5	8/25 x 2
M6	7/9	9,5/28 x 3
M8	9/11	12/30 x 3
M10	11/14	15/35 x 3
M12	13/18	19/40 x 3(5)
M16	17/22	23/50 x 4(5)
M20	22/28	29/50 x 4(5)
M24	26/32	33/60 x 5
M30	32/38	40/75 x 5
M36	38/44	46/85 x 5
M42	44/50	52/95 x 5
M48	50/56	58/110 x 5

UNC - bolter		
Bolt	Rør (d/D)	Skive (d/D x T)
1/4"	7/11	12/26 x 3
5/16"	9/13	14/34 x 3
3/8"	10,5/15,5	16/35 x 3
7/16"	13/16	17/43 x 3
1/2"	14/19	20/40 x 3
5/8"	17/22	23/50 x 4
3/4"	20/26	27/50 x 4
7/8"	23/29	30/50 x 4
1"	27/33	34/60 x 5
1 1/8"	30/36	38/70 x 5
1 1/4"	33/39	41/70 x 5
1 1/2"	40/46	48/85 x 5

ELECTRICAL INSULATED BOLT CONNECTIONS

ø Bolt	Steel washer ø d/Dxs	Insulation washer ø id/Dxs	Insulation tube ø d/D	Bore ø B
M12	13/35 x 5	19/40 x 5	13/18	19
M16	17/45 x 6	23/50 x 5	17/22	23
M20	21/50 x 6	29/50 x 5	22/28	29
M24	25/60 x 8	33/60 x 5	26/32	33



Rørlengden, L, skal være 1mm kortere enn teoretisk avstand mellom underlagsskivene.

Metric Bolts		
Rod	Tube (d/D)	Washer (d/D x T)
M5	5,5/7,5	8/25 x 2
M6	7/9	9,5/28 x 3
M8	9/11	12/30 x 3
M10	11/14	15/35 x 3
M12	13/18	19/40 x 3(5)
M16	17/22	23/50 x 4(5)
M20	22/28	29/50 x 4(5)
M24	26/32	33/60 x 5
M30	32/38	40/75 x 5
M36	38/44	46/85 x 5
M42	44/50	52/95 x 5
M48	50/56	58/110 x 5

UNC - Bolts		
Rod	Tube (d/D)	Washer (d/D x T)
1/4"	7/11	12/26 x 3
5/16"	9/13	14/34 x 3
3/8"	10,5/15,5	16/35 x 3
7/16"	13/16	17/43 x 3
1/2"	14/19	20/40 x 3
5/8"	17/22	23/50 x 4
3/4"	20/26	27/50 x 4
7/8"	23/29	30/50 x 4
1"	27/33	34/60 x 5
1 1/8"	30/36	38/70 x 5
1 1/4"	33/39	41/70 x 5
1 1/2"	40/46	48/85 x 5